

Announcing OPTiM Cloud IoT OS
Providing intuitive IoT device control, data analysis, AI
and cloud service connectivity to everyone

TOKYO, Japan (March 30, 2016) - OPTiM (TSE: 3694), a trailblazer in the field of smart device management, announces OPTiM Cloud IoT OS. This is an accumulation of research and development for IoT systems conducted since 2014, focusing on drones, network cameras and wearables. As a result, this OS provides intuitive IoT device control, data analysis, AI and cloud service connectivity.

■ Development background

The IoT (Internet of Things) is said to be "all things that are able to communicate and be organized through a network so that they can automatically be recognized, measured and controlled." With this, IoT could bring "The fourth industrial revolution," as it is expected that there will be 50 billion connected devices worldwide by the year 2020.*1 However, the concept of IoT is still hard to understand for many people, so there is demand for a system that can operate with the IoT in concrete terms.

The current situation resembles the age when computers were first emerging, and general operating systems such as Microsoft Windows® and Apple Macintosh® were not yet in the picture. In those times, specialized device drivers had to be created and verified for every peripheral computer accessory on the market. After observing the operating systems that came from the rise of the computer, OPTiM has decided to take the lead for the next generation of technology and create OPTiM Cloud IoT OS.

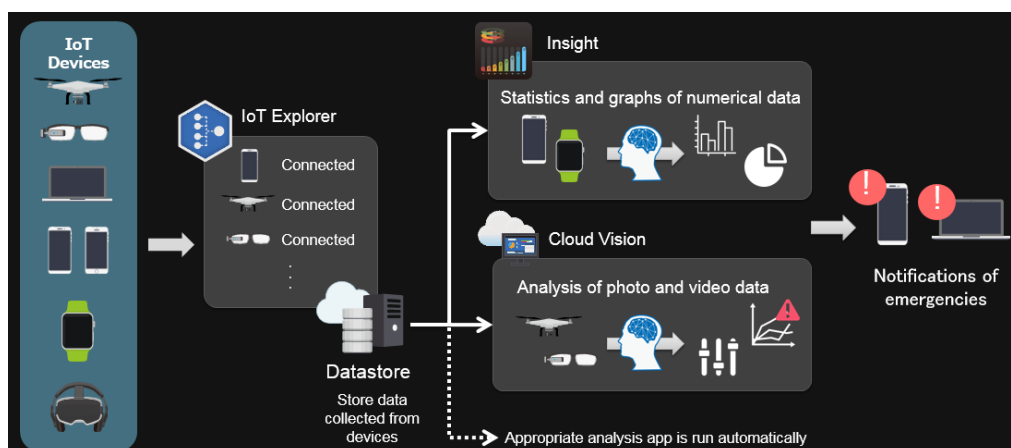
■ A new user experience

OPTiM Cloud IoT OS incorporates intuitive and secure IoT device management and control, data collection and analysis, and cloud service together so that each user can experience the benefits of this new user experience.

◆ Service features

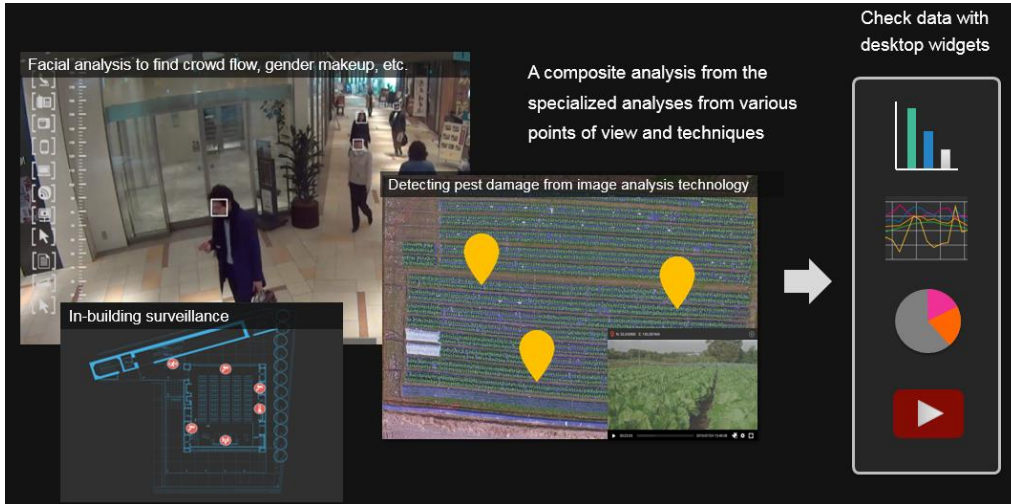
● See•Store•Inform

OPTiM Cloud IoT OS utilizes the desktop OS format for its UI (user interface), which is already intuitive to any technology user. It can accumulate data from IoT devices, and can be viewed and inspected on the bundled OPTiM IoT Explorer. Furthermore, alerts relating to this data can be set up to be delivered to a user's end devices.



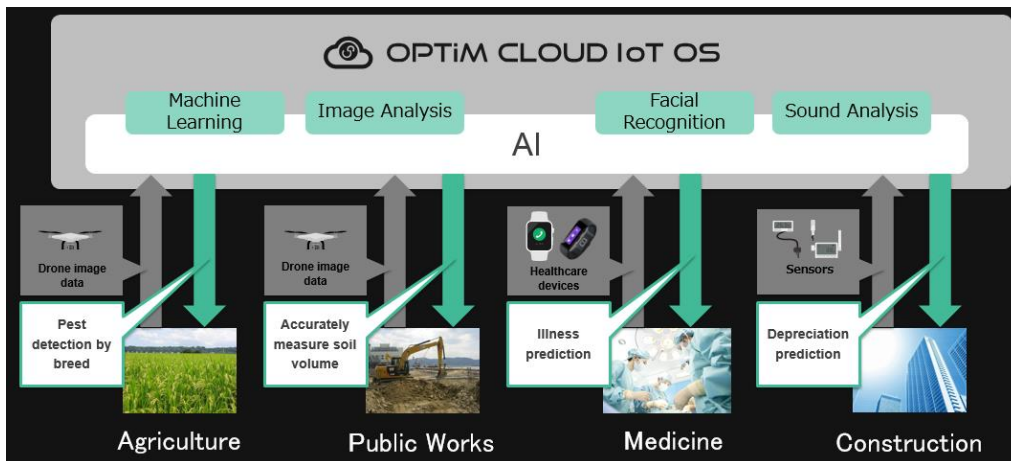
- **Perform Analysis**

In OPTiM IoT Explorer, detailed data from an IoT device or images from a camera can be collected. Then, users can perform analysis with the bundled app, OPTiM Insight. Both numerical data and image data can be processed and then displayed visually, so analysis can be understood at a glance. The OS also offers a standard widgets engine, so the latest, most important data can be seen easily on the desktop.



- **Thinking for you**

Video data and data collected from IoT devices can be processed by the OS’s artificial intelligence or by the big data analysis engine. By utilizing these two systems, even large amounts of data can be analyzed from every angle. This new approach to data can be used in any kind of industry. In agriculture, damage to crops caused by insects can be easily discovered, in the medical field, risk assessment and prevention can be aided by collecting vital data from health care devices, and the construction industry can predict building deterioration with sensors.



- **Secure**

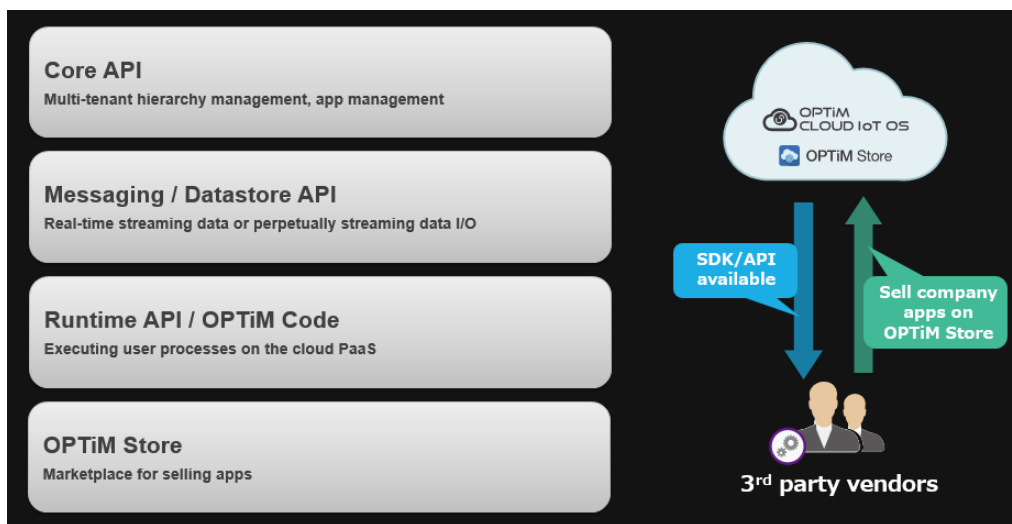
A company that holds its information in a clearly-defined space is called a tenant. Within a single tenant, there are multiple accounts, and there are groups and organizational structures. With this OS, the authority for each can be precisely defined. For example, the usage restrictions on data saved in the same location can be defined by each individual end user.

- **Open platform**

Because OPTiM Cloud IoT OS is an open platform, with OPTiM Code, applications that work on OPTiM Cloud IoT OS can be created easily from scratch. In addition, those application can be sold on OPTiM Store marketplaces.

【Scheduled API※2】

- Core API
Multi-tenant hierarchy management, app management
- Messaging / Datastore API
Real-time streaming data or perpetually streaming data I/O
- Runtime API / OPTiM Code
Executing user processes on the cloud PaaS※3



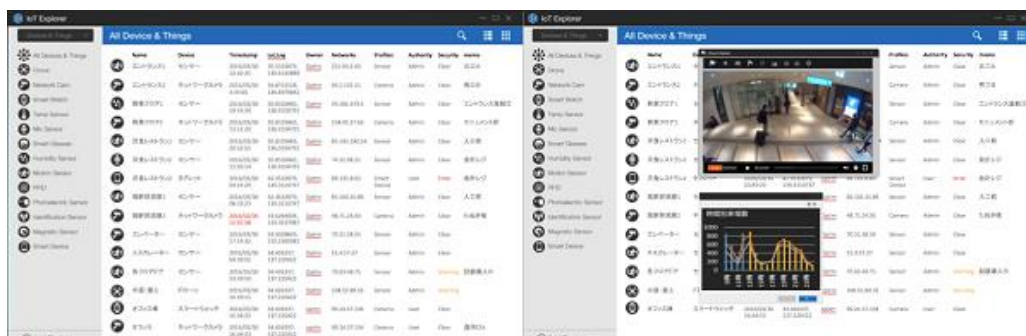
- **Removal of hardware restrictions**

Application servers and databases are offered through the internet to a computer. So, a system can be made on the cloud, and can be expanded automatically as necessary, without worrying about the memory restrictions of a physical device.

◆ **Bundled features**

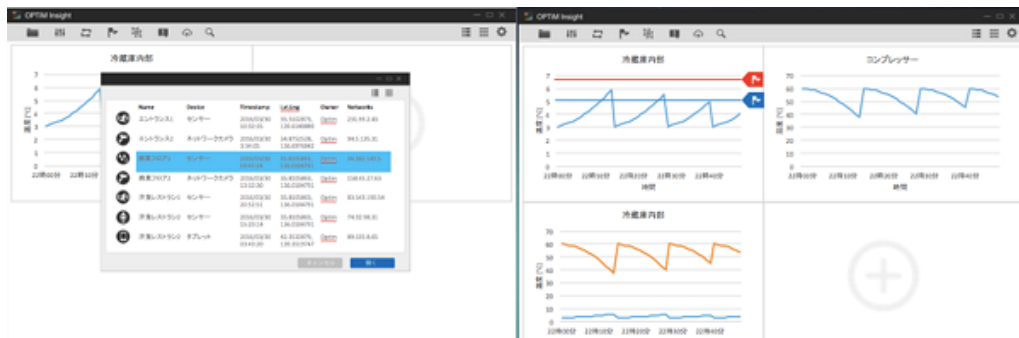
- **OPTiM IoT Explorer: device overview**

Connected devices and their data in an easy-to-understand and efficient table. Device management options also available.



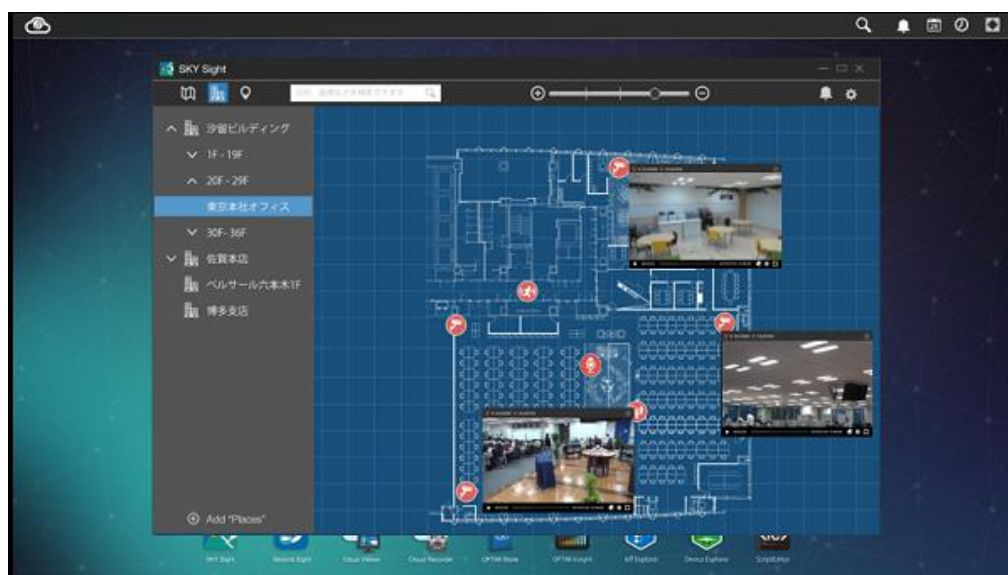
- **OPTiM Insight: Data analysis**

Data from IoT devices can be collected and analyzed, and then displayed with data visualization.



- **OPTiM SkySight: Geospatial information mapping**

Allowing inspection, analysis and operation of a geospatial map of IoT devices or sensors.



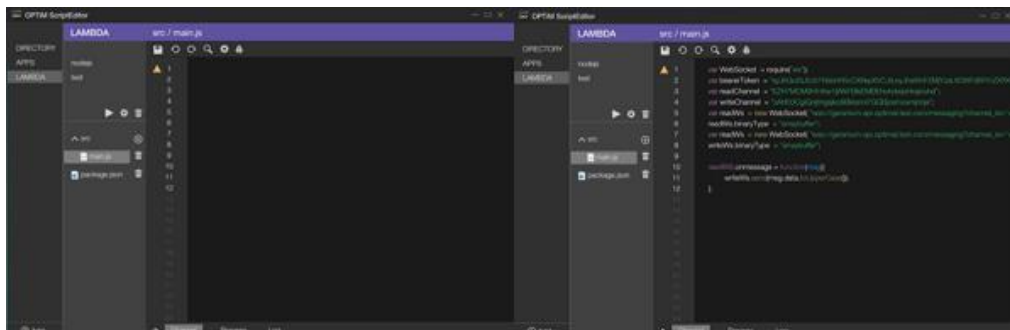
- **OPTiM Cloud Vision: Network camera image analysis**

Operate network cameras and inspect and analyze network camera video.



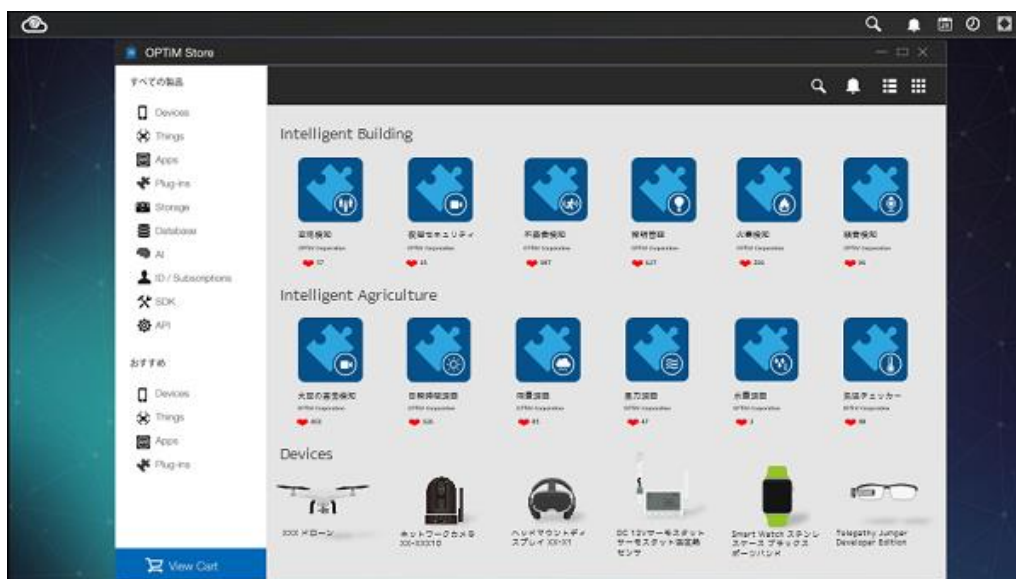
- **OPTiM Code: Integrated development environment**

An integrated development environment allowing creation of applications to run on OPTiM Cloud IoT OS.



- **OPTiM Store: IoT service marketplace**

A marketplace that allows the selling of IoT devices and applications, also includes tools, apps and services that can be purchased and then used right away.



OPTiM Cloud IoT OS is scheduled to be released in summer 2016.

For more information, please visit the OPTiM Cloud IoT OS website:

<https://en.optim.co.jp/cloud-iot-os/>

※1 Source: Cisco Systems, Inc., "The Value and Economics of the IoE of Japan in Global Business over the Next 10 Years"

※2 API: Stands for "application program interface," A set of orders, standards and functions that allow apps to be programmed to utilize functions of the system.

※3 PaaS stands for "Platform as a Service," A platform on the cloud for applications to be developed and run for a certain hardware or OS.

■ **About OPTiM Corporation** <http://en.optim.co.jp>

OPTiM is a leader in internet-based services that improve its clients' interactions with technology in all aspects of everyday life. Its services include Optimal Biz, a cloud device management service, Optimal Remote, a remote management service, Optimal Support, a setup support service, and the unlimited content and software suite series. Its business partners include NTT, KDDI, Canon, and Fuji Xerox. Based in Tokyo, Japan, its corporate motto is, "We make the net as simple as breathing."

【Copyright/Trademark】

- ※ The corporate names and product names mentioned above are registered trademarks or trademarks.
- ※ Windows[®] is Microsoft Corporation's registered trademark in the United States and other countries.
- ※ Macintosh[®] is a trademark or registered trademark of Apple Inc. in the United States and other countries.
- ※ The information presented in this press release is subject to change without notice.

Inquiries

OPTiM Corporate Promotion and Marketing Team

press@optim.co.jp TEL: +81-3-6435-8570 FAX: +81-3-6435-8560

OPTiM Cloud IoT OS website: <https://en.optim.co.jp/cloud-iot-os/>