

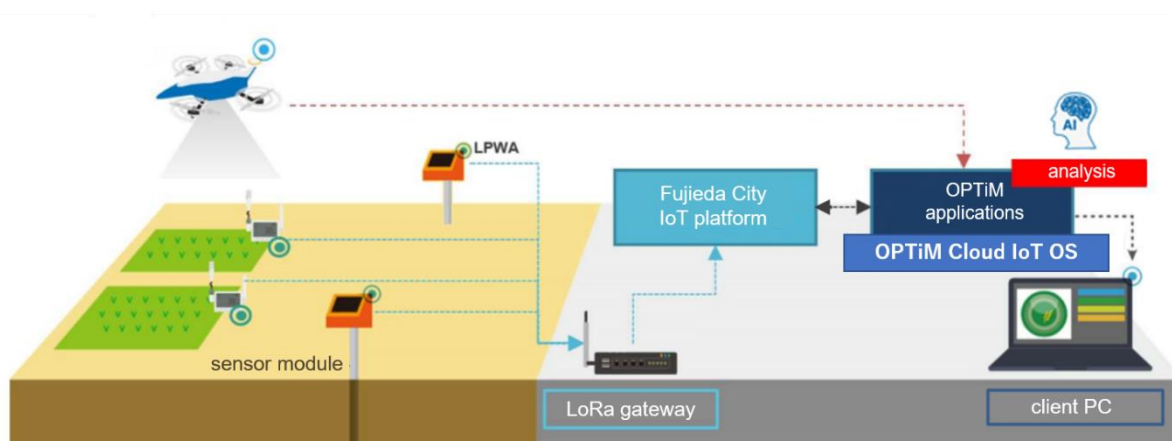
**OPTiM, Fujieda City Announce
Precision Agriculture Experiments
Utilizing AI and IoT to realize Smart Agriculture**

TOKYO, Japan (August 31, 2017) - OPTiM Corporation (TSE: 3694), a leading provider of AI/IoT/Big Data platform solutions, announces precision agriculture experiments conducted in Fujieda City, Shizuoka Prefecture. Fujieda City selected OPTiM for this as part of the “Field Management Support Project” experiments, which are to study field management through visualization of field data.

■ Outline of Field Management Support Project

This project is run by linking Fujieda City’s IoT platform, running an LPWA^{※1} network, with OPTiM Cloud IoT OS to visualize field data collected by sensors connected to the platforms by a LPWA network. Data such as rainfall, temperature, sunshine, and other environmental data including other weather data and soil condition. This data will be used to optimize field cultivation. This experiment will run from August 2017 to March 2018.

◆ Image of Field Management Support Project^{※2}



■ About Public Experiments by Fujieda City’s IoT (LPWA) Platform

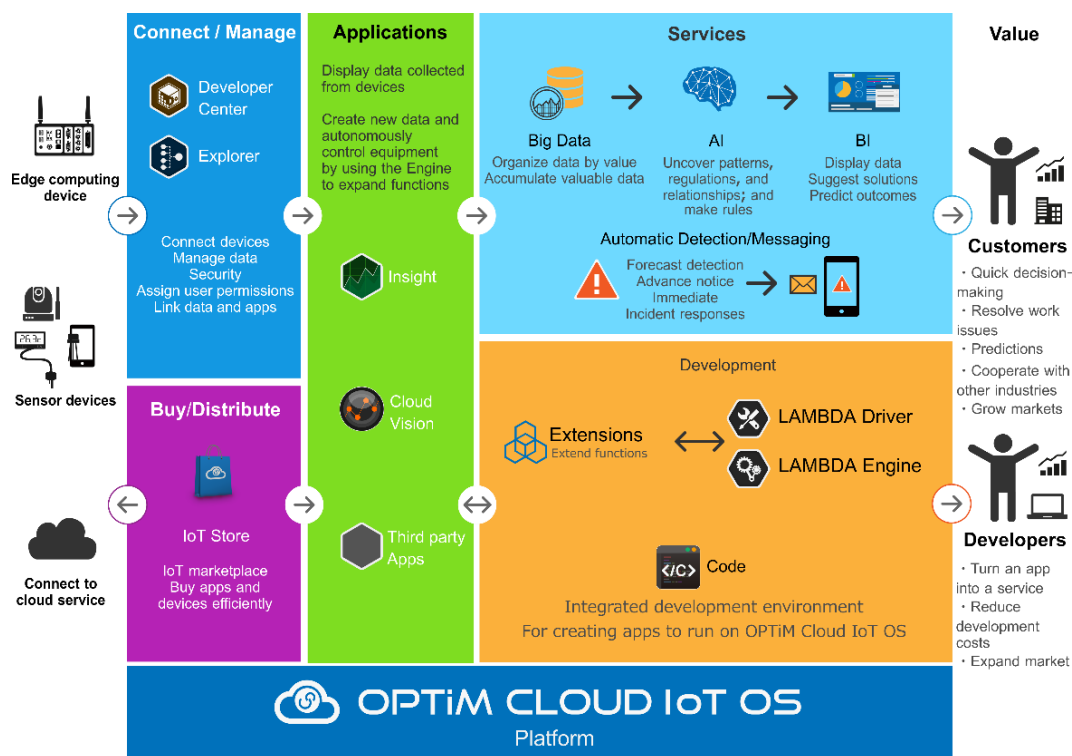
This project is part of an initiative by Fujieda City and Softbank Corp^{※3} to revitalize the local economy and improve the public services of Fujieda City through effective use of ICT and IoT, based on an IoT (through LoRaWANTM^{※4} LPWA) platform. The project aims to contribute to the development of IoT in Fujieda City, thereby improving industrial competitiveness and enriching local lifestyles.

To learn more about this project, please visit the project website below. (Japanese)

http://www.city.fujieda.shizuoka.jp/soshiki/kikakuzaisei/ict/boshu/iotpf_kokyo_koubo.html

■ About OPTiM Cloud IoT OS

OPTiM Cloud IoT OS is an intuitive and secure IoT solution. It allows users to manage and control connected devices, collect and store data on the cloud, and run analysis and AI to uncover insights. A powerful asset for businesses in any industry, Cloud IoT OS brings value to IoT systems and data.



For more information about OPTiM Cloud IoT OS, please visit the site below:

<https://en.optim.co.jp/cloud-iot-os/>

※1 LPWA stands for “low power wide area,” a general term that refers to a technology that allows for communication signals to be spread over a wide area while only consuming low amounts of electric power.

※2 Use of drones is under consideration as a future endeavor.

※3 Head office located in Minato-ku, Tokyo, Japan; president Ken Miyauchi

※4 LoRaWAN™ is a network using LoRa radio communication technology for IoT and is one of the representative standards of LPWA.

■ About OPTiM Corporation <https://en.optim.co.jp/>

OPTiM is a leader in internet-based services that improve its clients’ interactions with technology in all aspects of everyday life. Its solutions provide comprehensive IoT management and multi-functional remote communication. Its business partners include NTT, KDDI, Canon and Fuji Xerox. Based in Tokyo, Japan, its corporate motto is, "We make the net as simple as breathing."

【Copyright/Trademark】

※ The corporate names and product names mentioned above are registered trademarks or trademarks.

※ The information presented in this press release is subject to change without notice.

Inquiries

OPTiM Corporate Promotion and Marketing Team

press@optim.co.jp TEL: +81-3-6435-8570 FAX: +81-3-6435-8560

OPTiM Cloud IoT OS website: <https://en.optim.co.jp/cloud-iot-os/>