

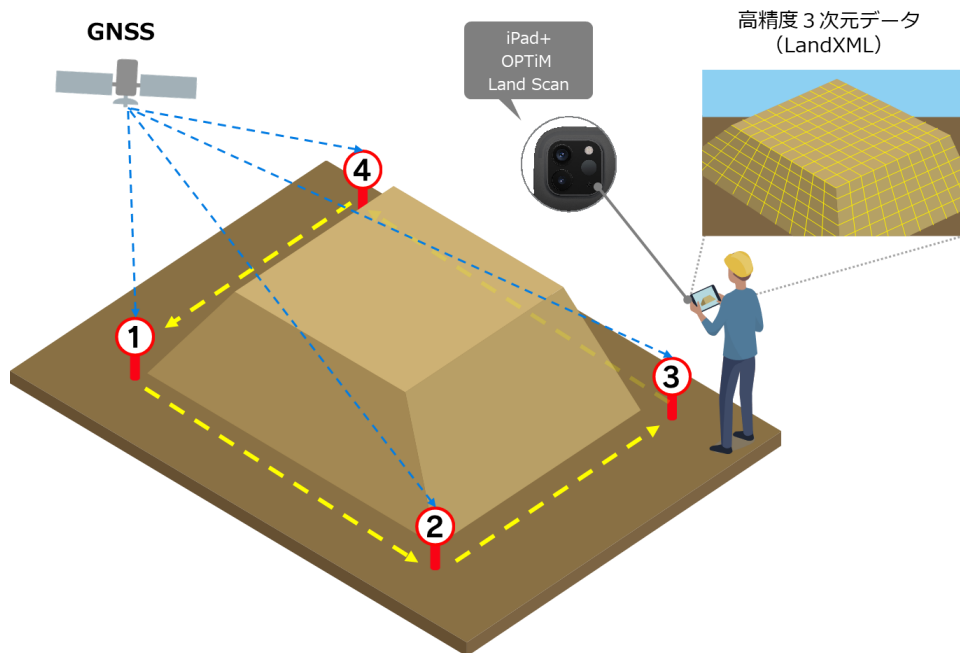
**World's First App for Easy High-Precision 3D Surveying with an iPad Pro,
OPTiM Land Scan Beta, Now Available for Free**
Reduce Surveying Time and Labor Costs; Solve Labor Shortage Problems

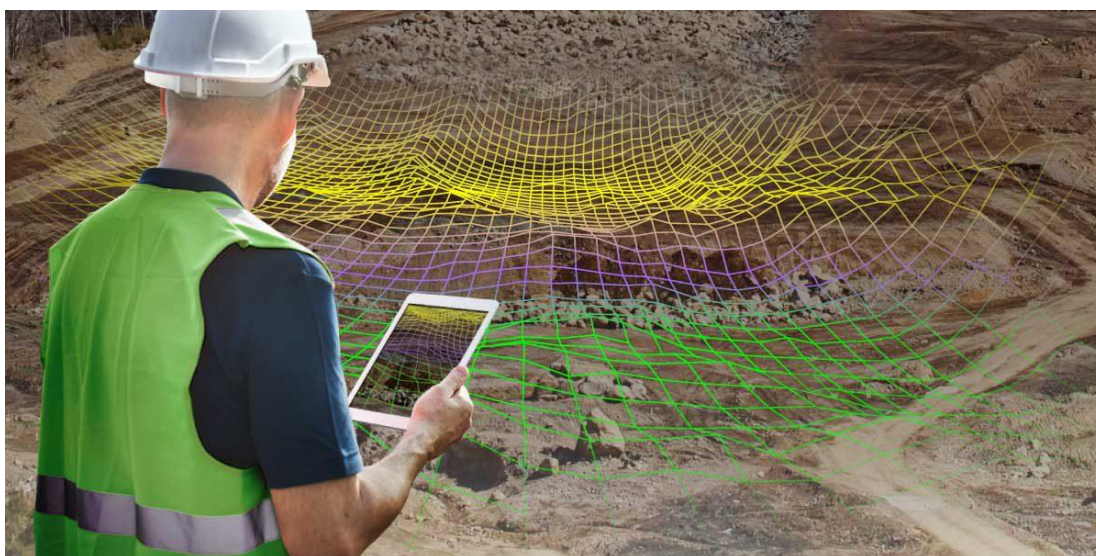
OPTiM Corporation, a leader in AI, IoT, and Big Data platforms, has announced the OPTiM Land Scan app today. With LiDAR^{※1} sensor-equipped tablets, users can obtain high-precision 3D data of surveying targets such as soil structure^{※2}. OPTiM is the world's first^{※3} to launch this kind of application. From using this application, users will be able to reduce surveying time and labor costs, as well as solve other issues in the construction and civil engineering industries, such as engineer shortages.

This application was developed as part of the "Construction x IT Strategic Comprehensive Alliance" with Matsuo Construction, the largest general contractor in the Kyushu area, to resolve issues in the construction industry. On August 3, 2020, OPTiM will start to offer the beta version of this application free of charge.

■ About OPTiM Land Scan

By using a tablet to scan surveying targets like soil structure, this application can generate the high-precision 3D data necessary for civil engineering sites. This application is intended to be used at small sites where it would be difficult to deploy drones or laser scanners. It is also capable of reducing surveying time by up to 60%^{※4} compared to conventional electro-optical surveying. In addition, specialized surveying knowledge is not required to scan with this application, and can be done by a single person, helping with labor shortages. Furthermore, the 3D data acquired from surveying with this application can be output in LandXML format, allowing users to create cross-sectional maps using point cloud processing or CAD software.





■ Surveying Process of OPTiM Land Scan

This service is designed to be adaptable to the following processes.

- Before construction: pre-construction surveying
- During construction: in-process workmanship surveying
- After construction: completed workmanship surveying

◆ Surveying Process in the Construction Industry



■ Features of OPTiM Land Scan

1. One person can easily survey
With conventional surveying methods, operators for total stations and people to hold pin poles are needed. However, this service allows for one person to perform the entire survey simply by scanning the surveying target with a tablet running this app.
2. Reduced surveying time
3D data can be acquired by just scanning the target, reducing necessary surveying time and eliminated the need 3D data processing, reducing the overall time needed for surveying.
3. Anyone can do high-precision surveying
Even inexperienced surveyors can do a high-precision survey with a simple scan of soil structure or another target. In addition, the technical training time is shortened, alleviating engineer shortages.
4. The realization of ICT earthwork
Acquiring 3D data allows for users to create construction plans based on ICT earthwork and to generate and deliver 3D data such as 3D blueprints, making ICT earthwork possible for even small and medium sized businesses which could not do such work previously.

■ Usage Environment

The system requirements for OPTiM Land Scan are as follows.

• iPad application

Supported hardware	Supported version
iPad Pro 2020 models	iOS 13.4 or later

• Web application

Supported OS	Supported browser
Windows 8.1 or later	Google Chrome (latest version)
OS X Yosemite 10.10 or later	Google Chrome (latest version)

• GNSS receiver^{※5}

Available from	Product name
BizStation Corp.	Dropper RWP

■ How to apply

To apply, please visit:

<https://www.optim.co.jp/construction/optim-land-scan/>

■ About OPTiM INNOVATION 2020

OPTiM INNOVATION 2020 is an online seminar with the theme of "Innovation" to be held around October 2020. OPTiM will introduce the new product featured in this press release, along with OPTiM's AI solutions for agriculture, healthcare, construction, and other industries. In addition, attendees will have the opportunity to listen to presentations from a variety of industry experts. Participation and webinar details will be announced at a later date.

■ About "Construction x IT Strategic Comprehensive Alliance" with Matsuo Construction

On September 27, 2019, OPTiM and Matsuo Construction entered their "Construction x IT Strategic Comprehensive Alliance" to promote initiatives for utilizing AI and IoT technologies in the construction industry. Currently, the construction industry is facing major challenges, including labor shortages. The two companies hope to jointly create solutions to improve the efficiency of construction operations and to support customers in the Saga and the wider Kyushu region to solve problems facing the construction industry across the country.

For more information, please refer to the press release below (Japanese):

<https://www.optim.co.jp/newsdetail/20190927-pressrelease>

※1 LiDAR: an abbreviation for Light Detection and Ranging, a type of sensor technology that uses laser light to accurately detect the distance, position, and shape of an object.

※2 A structure consisting of soil and other materials

※3 As of August 3, 2020, according to research conducted by OPTiM for surveying applications using a tablet with a LiDAR sensor.

※4 Based on the results of OPTiM's calculations, assuming a site area of 800 square meters

※5 A device that receives radio waves sent to the ground from multiple navigation satellites to acquire positional information.

■ About Matsuo Construction Co., Ltd.

In the 135 years since its establishment in 1885 as Matsuo Gumi, Matsuo Construction Co., Ltd. has grown into the largest general construction company in the Kyushu region. Focusing mainly on civil engineering and construction, its head office is in Saga, and has 15 branch offices. The company strives to be a company that suits current needs and to create a well-balanced, modern corporate entity that responds to the changes of the times while always keeping an eye on the future of people and society.

In addition, the company focuses on promoting new businesses and technological innovations, and for the commemoration of its 100th anniversary, the company established the "Kogakukan" integrated junior and senior high school in Saga Prefecture, where children can be nurtured to carry the future of Japan to the next generation. With the corporate philosophy of "Always contributing to our customers," the company aims to earn the reputation as "Japan's most trustworthy" from their clients by following the company policy of "Good, Fast, and Reasonable."

Company name:	Matsuo Construction Co., Ltd.
Head office:	1-4-27 Tafuse, Saga City, Saga
Headquarters:	3-4-9 Yakuin, Chuo-ku, Fukuoka City, Fukuoka
Tokyo	2-16-13 Koenji-Minami, Suginami-ku, Tokyo
Headquarters:	
Branches and sales offices:	15 branch offices and 28 sales offices located in thirteen prefectures, Tokyo, and Osaka, from Sendai to Okinawa
Affiliated companies:	Matsuo Gakuen Kogakukan Junior and Senior High School, in addition to 12 other companies
President:	Tetsugo Matsuo
Established:	1885
Capital:	100 million yen
Business description:	General construction business (comprehensive civil engineering and construction contracting); planning, design, and supervision of civil engineering and construction work; sales and consignment sales of materials for civil engineering and construction work; acquisition, sales, and leasing of real estate; industrial waste disposal; sales of water heaters, kitchen appliances, and other equipment; management of public facilities such as science museums, gymnasiums, and public housing, and other public facilities, as well as ancillary business related to those listed above.
URL:	http://www.matsuo.gr.jp

■ About OPTiM Corporation <https://www.optim.com>

OPTiM is a leader in internet-based services that improve its clients' interactions with technology in all aspects of everyday life. Its solutions provide comprehensive IoT management and multifunctional remote communication. Its business partners include NTT, KDDI, Canon and Fuji Xerox. Based in Tokyo, Japan, its corporate motto is, "We make the net as simple as breathing."

【Copyright/Trademark】

- ※ The corporate names and product names mentioned above are registered trademarks or trademarks.
- ※ The information presented in this press release is subject to change without notice.

Inquiries

OPTiM Corporate Promotion and Marketing Team

press@optim.co.jp TEL: +81-3-6435-8570 FAX: +81-3-6435-8560